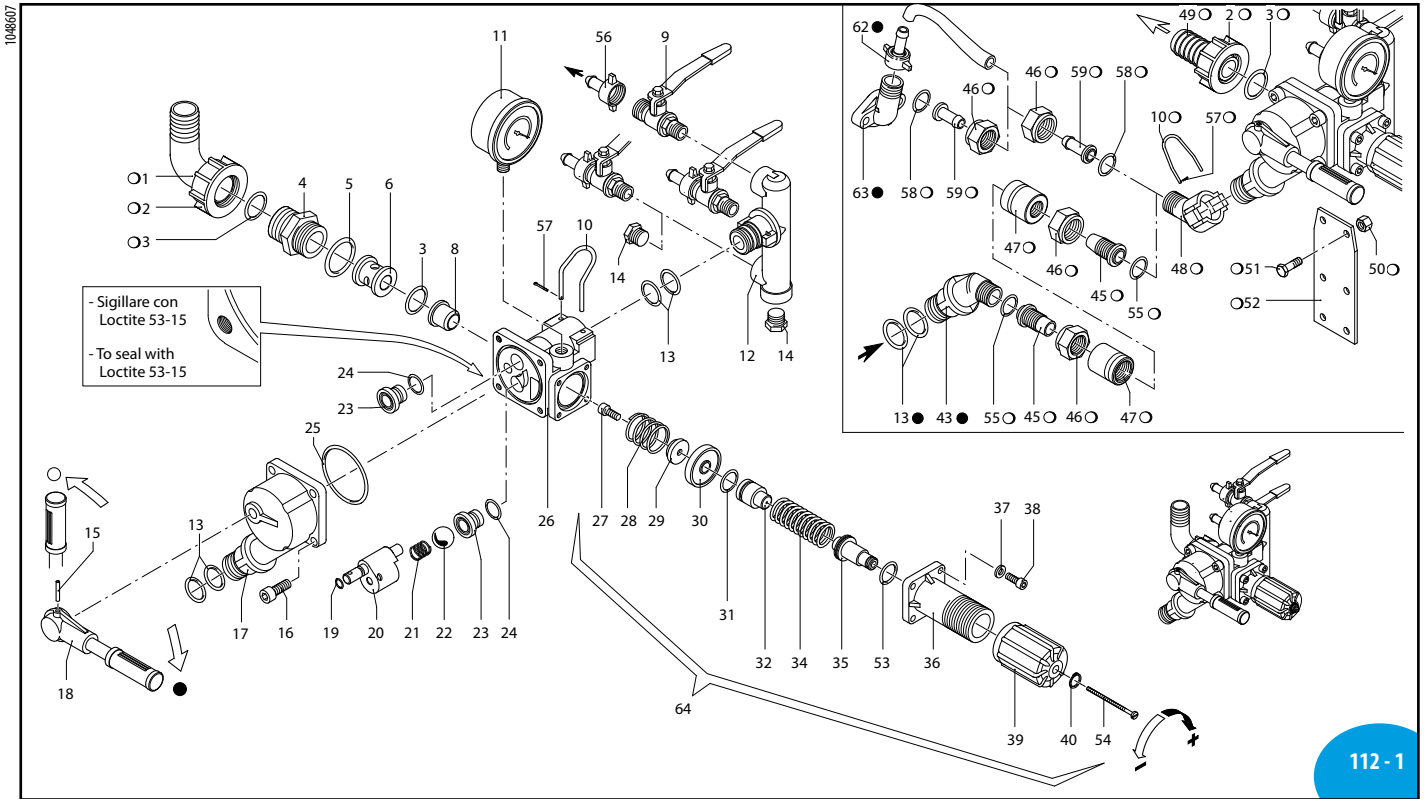


VDR 50 cod. 950 - cod. 904 (con manometro ISOMETRICO)



SL000140-GX

Pos	Cod.	Descrizione	Description	Q.ty	Note
1	550370	Curva Ø 25	Elbow	1	
2	550242	Girello 1" G	Ring nut	1	
3	550350	Guarnizione OR Ø 23,81x2,62	O-ring	2	▶
4	1040780	Raccordo 1" G M-M	Fitting	1	
5	550040	Guarnizione OR Ø 26,65x2,62	O-ring	1	▶
6	1040670	Distanziale	Spacer	1	
8	1040660	Sede	Seat	1	Inox
9	130491	Rubinetto 3/8" G - 1/2" G M-M DX	Cock	3	⊗
10	1040690	Forcella	Fork	2	
11	550545	Manometro	Pressure gauge	1	0-80 bar ⊕
	1151010	Manometro ISOMETRICO Ø63	Pressure gauge	1	0-50-80 bar ⊕
12	1040680	Corpo	Body	1	
13	390180	Guarnizione OR Ø 18,72x2,62	O-ring	6	
14	130171	Tappo 3/8" G	Plug	2	⊕ C ₂₀
15	1040820	Spina	Pin	1	
16	108030	Vite TCEI M8x20	Screw	4	⊕ C ₂₀
17	1040720	Corpo distributore	Body	1	
18	1040730	Manopola	Knob	1	
19	1080200	Guarnizione OR Ø 5,6x2,2	O-ring	1	▶
20	1040700	Perno	Hub pin	1	⊗
21	850680	Molla	Spring	1	⊗
22	850660	Sfera	Ball	1	Inox
23	850650	Sede	Seat	2	⊗
24	740290	Guarnizione OR Ø 14x1,78	O-ring	2	▶
25	1040710	Guarnizione OR Ø 56x2	O-ring	1	▶
26	1040600	Corpo	Body	1	
27	680560	Vite TCEI M6x16	Screw	1	Inox ⊕ C ₁₀
28	1040650	Molla	Spring	1	⊗
29	1040640	Valvola	Valve	1	Inox
30	1040630	Membrana	Diaphragm	1	Desmopan ⊗
	1040631	Membrana	Diaphragm	1	NBR ⊗
31	880833	Guarnizione OR Ø 15,54x2,62	O-ring	1	90 Sh ⊗
32	1040622	Pistone	Piston	1	⊗
34	1040830	Molla	Spring	1	⊗
35	394770	Perno	Hub pin	1	
36	1040610	Corpo guida molla	Body	1	
37	550331	Rondella	Washer	4	
38	1040370	Vite TCEI M6x22	Screw	4	C ₄
39	394790	Manopola	Knob	1	
40	480550	Anello seeger Øe 12	Ring	1	▶
43	1040760	Raccordo 3/4" G M	Fitting	1	

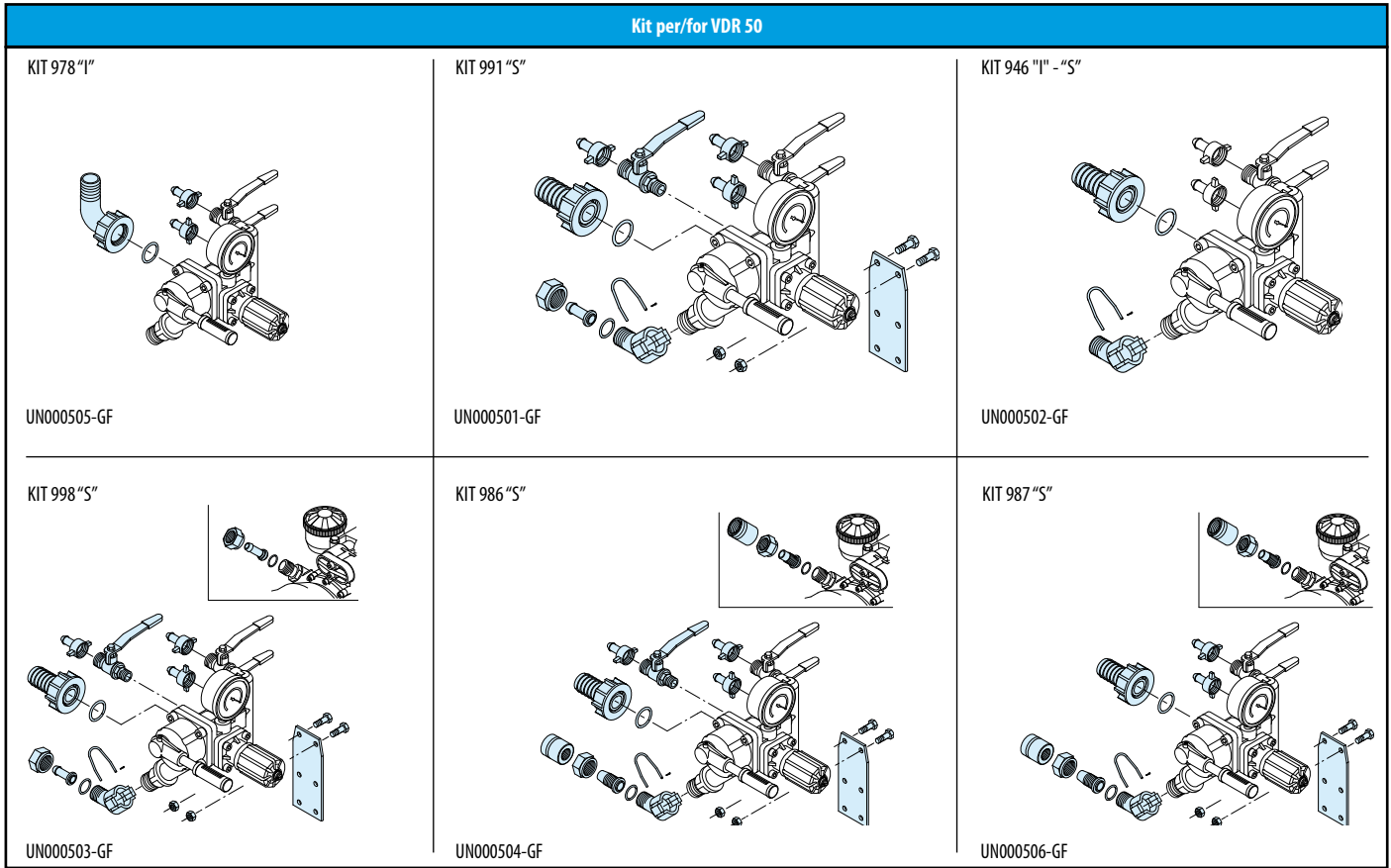
Pos	Cod.	Descrizione	Description	Q.ty	Note
45	1040810	Portagomma Ø 13x24	Hose tail	2	
	850780	Portagomma Ø 19x34	Hose tail	2	
46	1040790	Girello 3/4" G	Ring nut	2	Per / For ø 13
	850790	Girello 3/4" G	Ring nut	2	Per / For ø 19
47	1040800	Ghiera	Ring nut	2	Per / For ø 13
	850770	Ghiera	Ring nut	2	Per / For ø 19
48	1040770	Raccordo	Fitting	1	
49	550210	Tubo Ø 25	Pipe	1	
50	390270	Dado M8	Nut	2	C ₂₀
51	180370	Vite TE M8x25	Screw	2	C ₂₀
52	850690	Staffa	Bracket	1	
53	770130	Guarnizione OR Ø 20,35x1,78	O-ring	1	⊗
54	1150650	Vite TCTC M3x60	Screw	1	⊕ C ₃
55	960160	Guarnizione OR Ø 17,86x2,62	O-ring	2	▶
56	110131	Girello 1/2"	Ring nut	3	
57	1040950	Copiglia	Split pin	2	
58	880830	Guarnizione OR Ø 15,54x2,62	O-ring	2	▶
59	1150580	Portagomma Ø 13	Hose tail	2	
62	110130	Girello 1/2"	Ring nut	1	
63	450145	Flangia	Flange	1	
64	1362	Kit valvola regolazione	Valve kit adjustment	1	

⊕ Non compreso nel VDR 50 - No part of VDR 50
 ● Compresso nella pompa - Part of pump

KIT 1955 OR - O-Rings		KIT 1956 Pronto intervento N° 1 - Maintenance repair N° 1				KIT 2484 Pr. interv. N° 2 - Mant. rep. N° 2	
Pos.	Q.ty	Pos.	Q.ty	Pos.	Q.ty	Pos.	Q.ty
3	2	3	2	24	2	3	2
5	1	5	1	25	1	5	1
13	4	10	2	28	1	8	1
19	1	13	4	29	1	27	1
24	2	15	1	30	1	29	1
25	1	19	1	31	1	30	1
31	1	21	1	39	1	31	1
53	1	22	1	53	1		
55	2	23	2	57	2		

VDR 50

Kit per/for VDR 50



KIT 978 "I"

KIT 991 "S"

KIT 946 "I" - "S"

UN000505-GF

UN000501-GF

UN000502-GF

KIT 998 "S"

KIT 986 "S"

KIT 987 "S"

UN000503-GF

UN000504-GF

UN000506-GF

Comando incorporato e separato - Build-in control unit and remote control

KIT 978 "I" Comando incorporato Build in control			
Pos.	Q.ty	Pos.	Q.ty
1	1		
2	1		
3	1		
56	2		
Per / for AR 713 - AR 813 - AR 1064			

KIT 991 "S" Comando separato Remote control			
Pos.	Q.ty	Pos.	Q.ty
2	1	56	3
3	1	57	1
9	1	58	1
10	1	59	1
46	1		
48	1		
49	1		
50	2		
51	2		
52	1		
Per / for AR 30 - AR 50			

KIT 946 "S" Comando separato Remote control		KIT 946 "I" Comando incorporato Build in control	
Pos.	Q.ty	Pos.	Q.ty
2	1	2	1
3	1	3	1
10	1	10	1
48	1	48	1
49	1	49	1
57	1	57	1
Per / for AR 503 - AR 713 AR 813 - AR 1064 AR 903 - AR 1053 AR 1203 BHA/BHS/BHP 130		Per / for AR 903 AR 1053 - AR 1203 BHS 90 - 105 - 120	

KIT 998 "S" Comando separato Remote control			
Pos.	Q.ty	Pos.	Q.ty
2	1	52	1
3	1	56	3
9	1	57	1
10	1	58	2
46	2	59	2
48	1		
49	1		
50	2		
51	2		
Per / for AR 503 - AR 903 - AR 1053 - AR 1203 AR 713 - AR 813 - AR 1064 - AR 1265 BHA/BHS/BHP 130			

KIT 986 "S" Comando separato Remote control			
Pos.	Q.ty	Pos.	Q.ty
2	1	51	2
3	1	52	1
9	1	55	2
10	1	56	3
45	2	57	1
46	2		
47	2		
48	1		
49	1		
50	2		
Per / for AR 503 - AR 713 - AR 813			

KIT 987 "S" Comando separato Remote control			
Pos.	Q.ty	Pos.	Q.ty
2	1	51	2
3	1	52	1
10	1	55	2
45	2	56	2
46	2	57	1
47	2		
48	1		
49	1		
50	2		
Per / for AR 903 - AR 1053 - AR 1203 AR 1064 - BHA/BHS/BHP 130			

Gruppi comando
Control units